

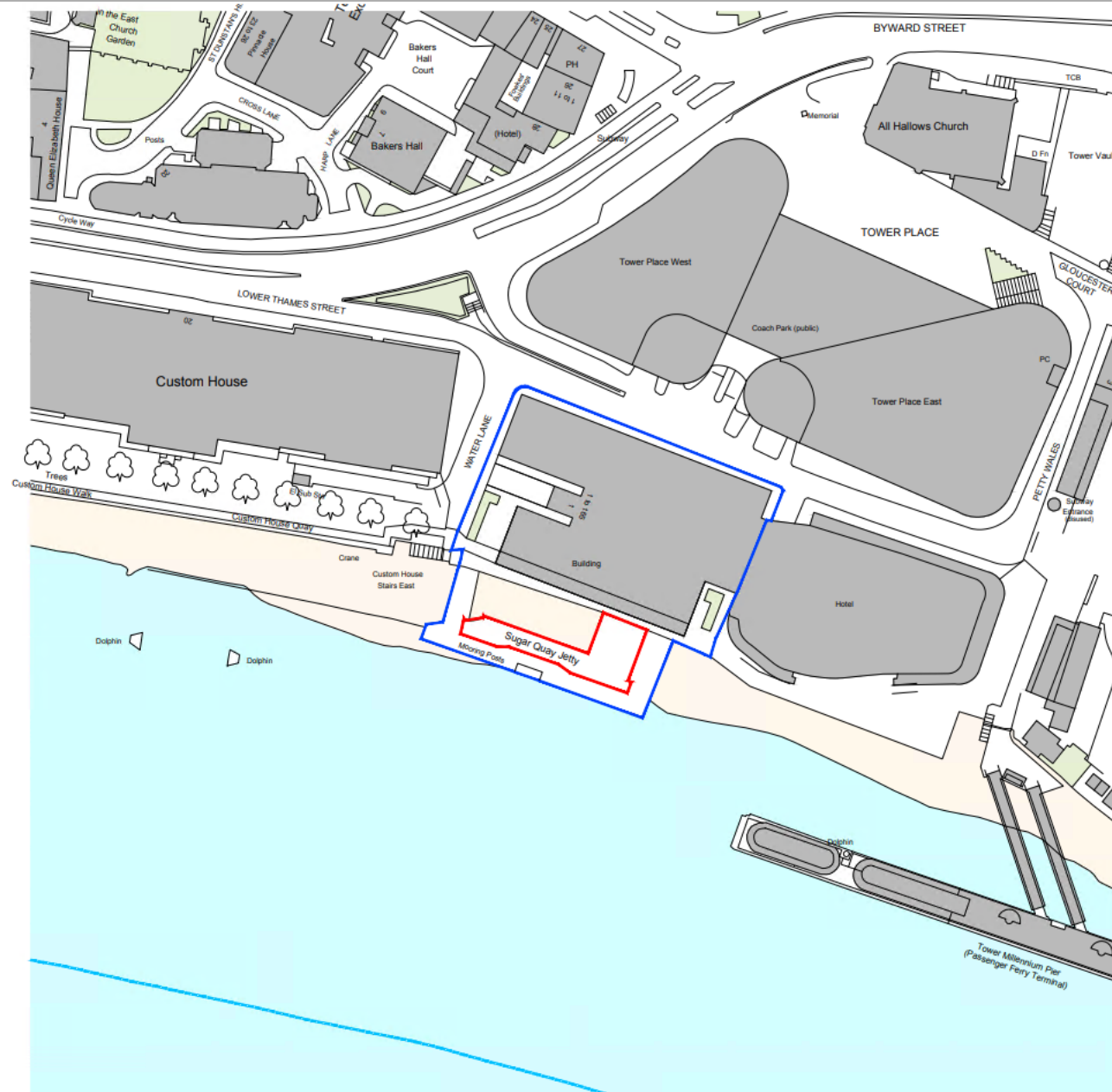


# **Sugar Quay Jetty**

## **Planning Applications Sub-Committee**

9<sup>th</sup> September 2025

# Sugar Quay Jetty



Location Plan  
1:1,250

0 12.5m 25

Site location



# Sugar Quay Jetty



Aerial View



# Sugar Quay Jetty



Aerial View

# Sugar Quay Jetty



Site Photos – view of Sugar Quay Jetty from the West



# Sugar Quay Jetty



Site Photos – view looking south from Jetty

# Sugar Quay Jetty



**Site Photos – looking East from Western gate of Jetty**



## Sugar Quay Jetty



Site Photos – looking East from South-Western corner of Jetty



# Sugar Quay Jetty



**Site Photos – Jetty and apartment buildings, with commercial unit at ground level**



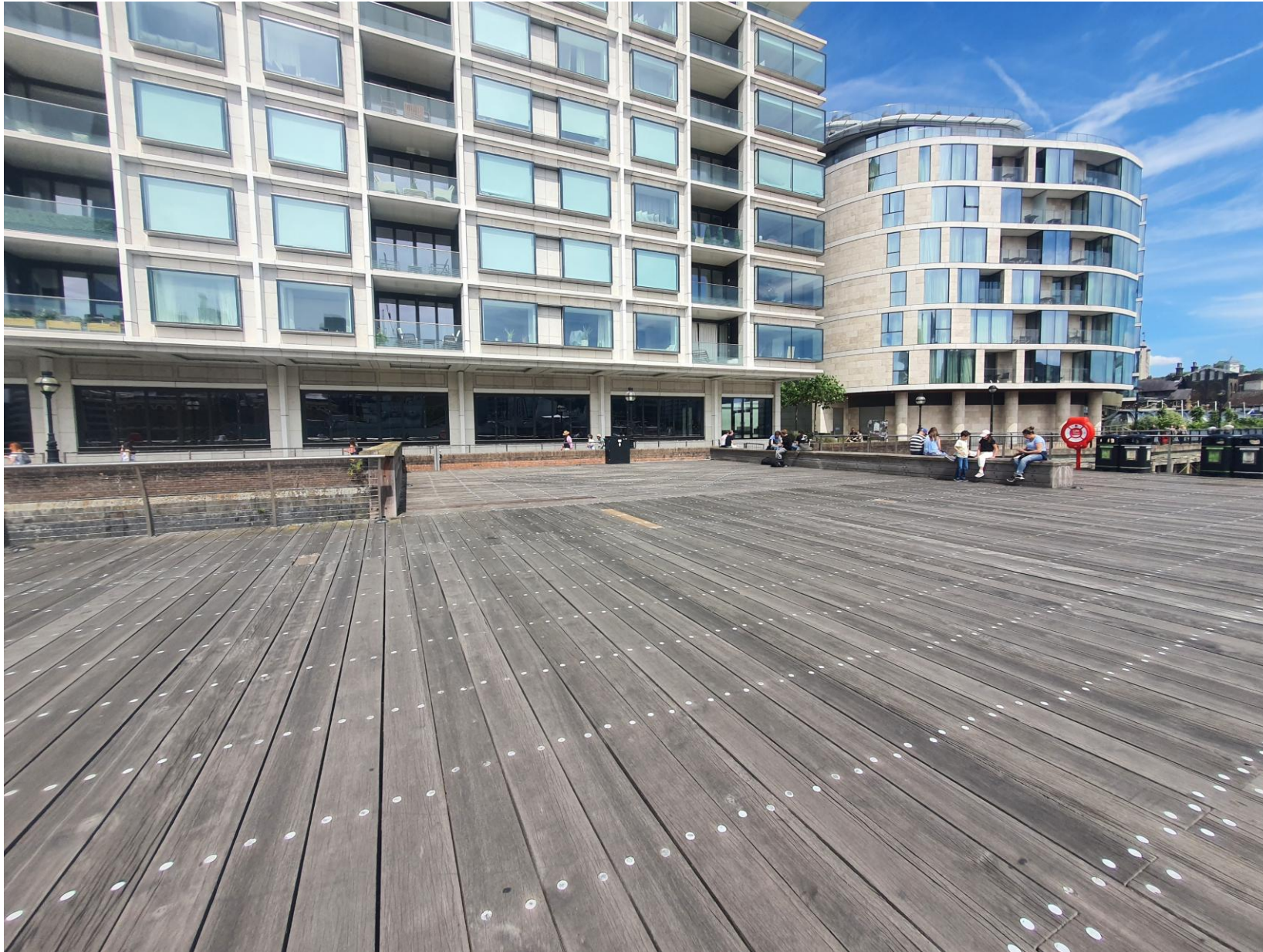
# Sugar Quay Jetty



Site Photos



# Sugar Quay Jetty



Site Photos



# Sugar Quay Jetty



Site Photos



# Sugar Quay Jetty



Site Photos – looking towards Eastern gate of jetty and front elevation



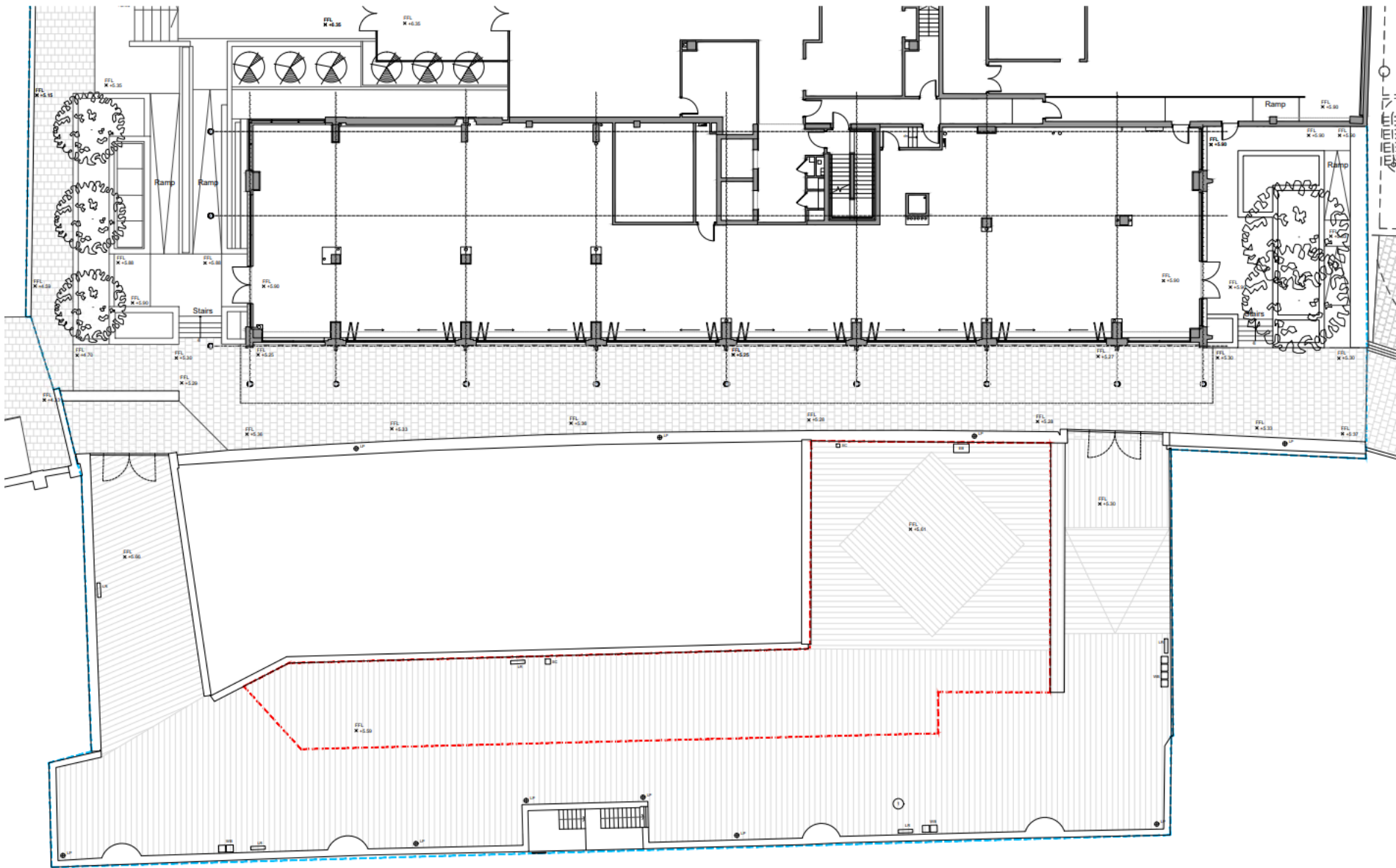
# Sugar Quay Jetty



Site Photos – Looking west from eastern end of Sugar Quay



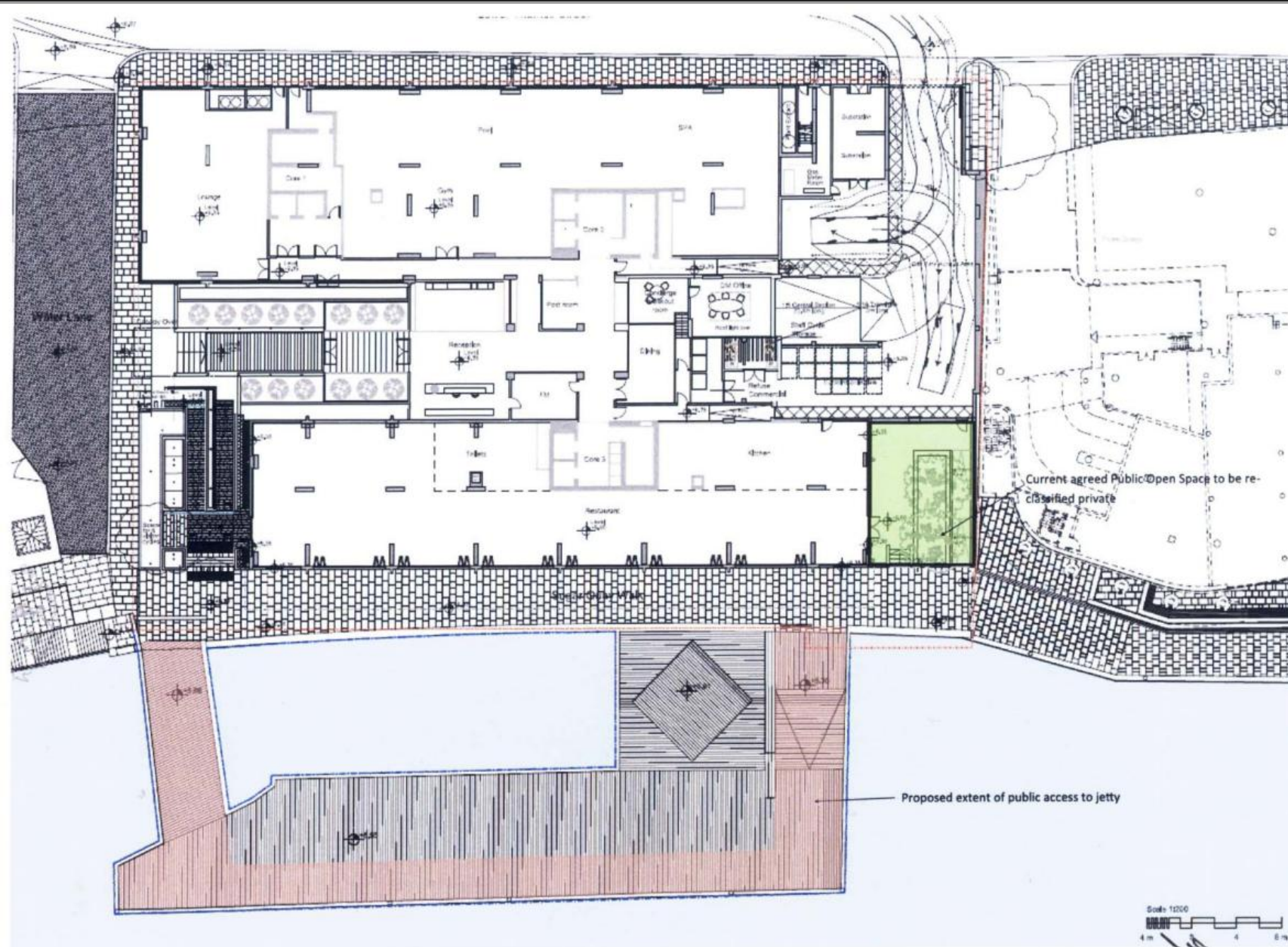
# Sugar Quay Jetty



## Existing Jetty Plan



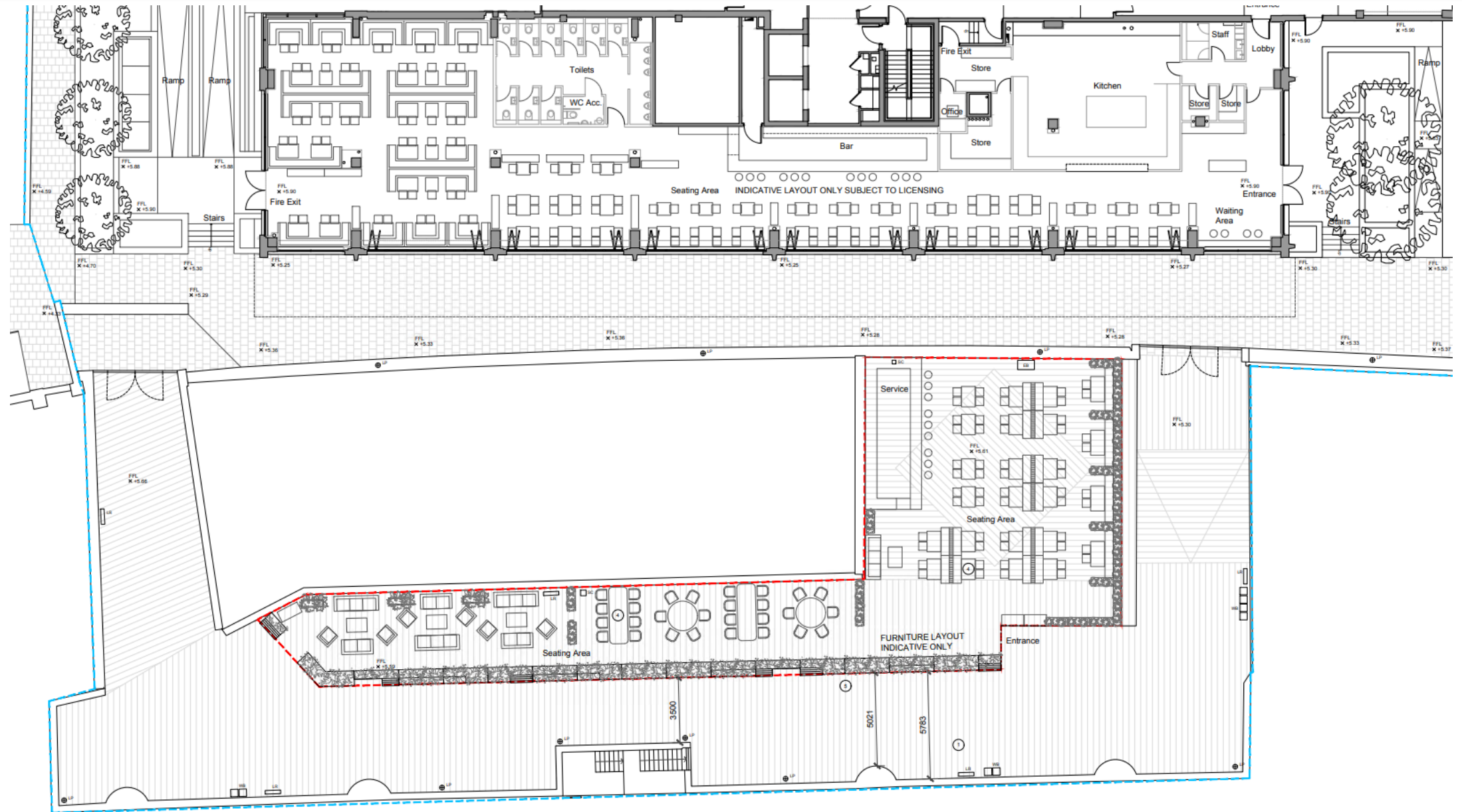
# Sugar Quay Jetty



Plan extracted from S106 DoV for 14/01006/FULMAJ, dated 11 May 2016



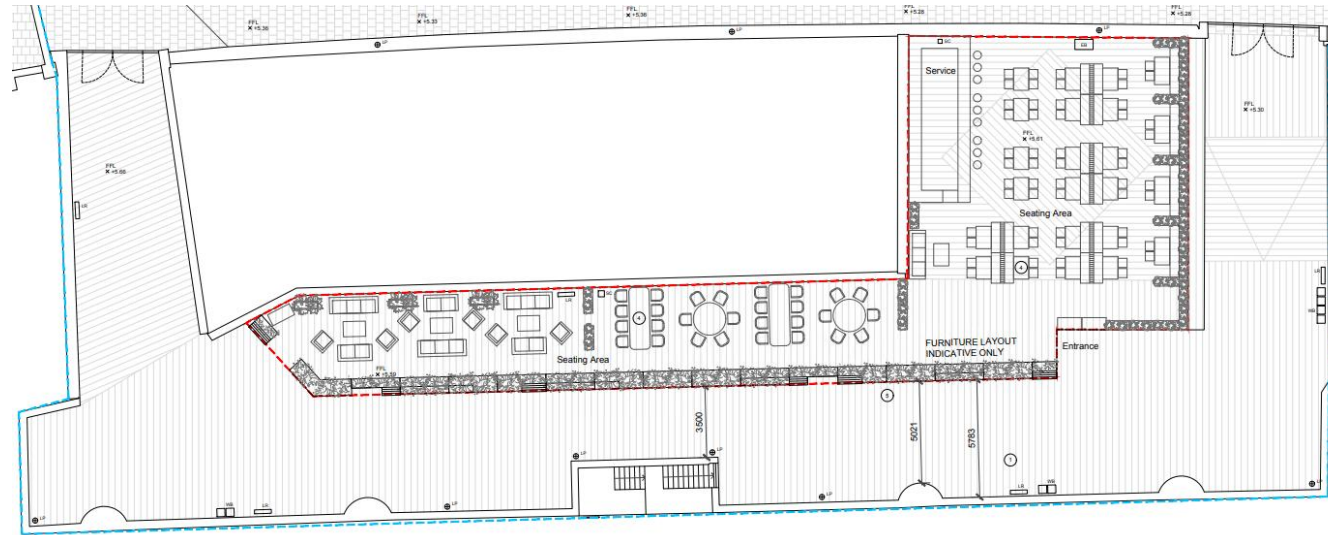
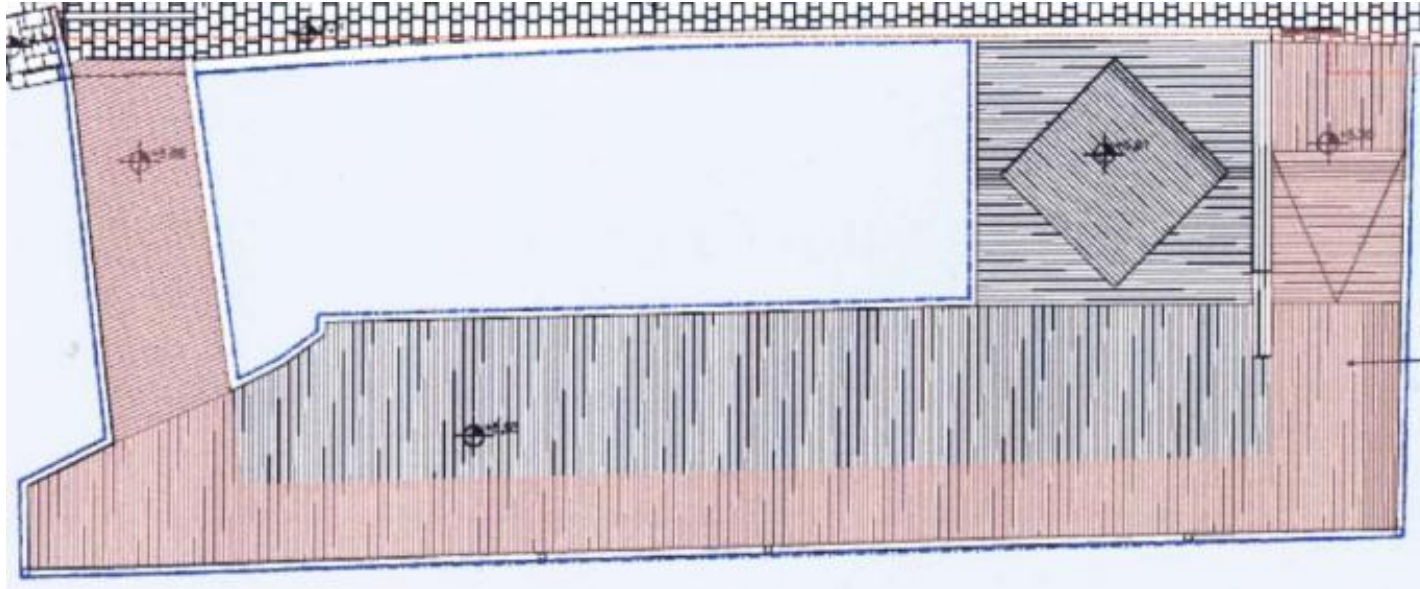
# Sugar Quay Jetty



# Proposed Jetty Plan



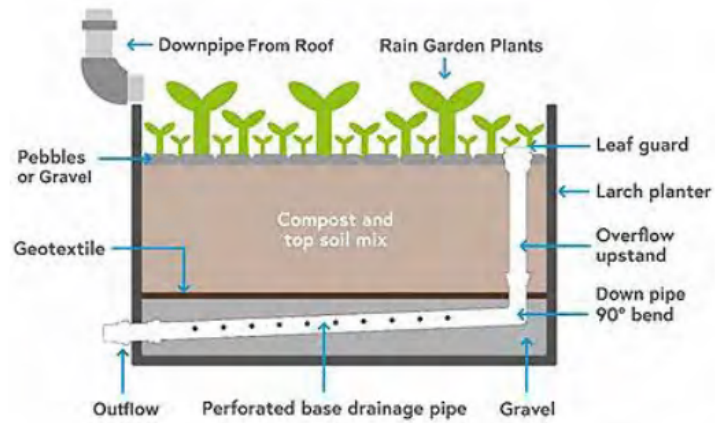
# Sugar Quay Jetty



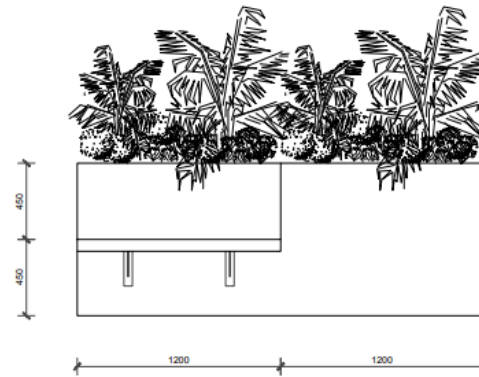
Proposed Jetty and S106 Plan side by side



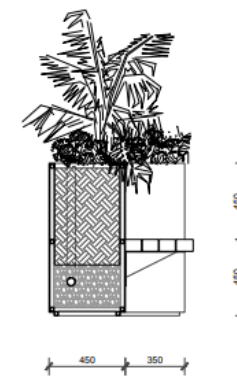
# Sugar Quay Jetty



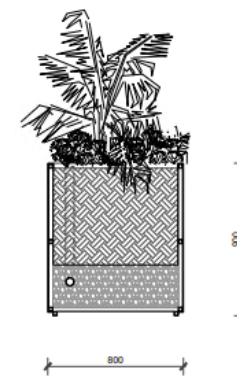
The planters would have a water storage volume of between 250 and 450 litres (Includes 20% for temporary water storage in the soil mix). The outflow rate ranges from 15 to 20 litres per hour depending on height of head of water.



Planters - View A  
1:25



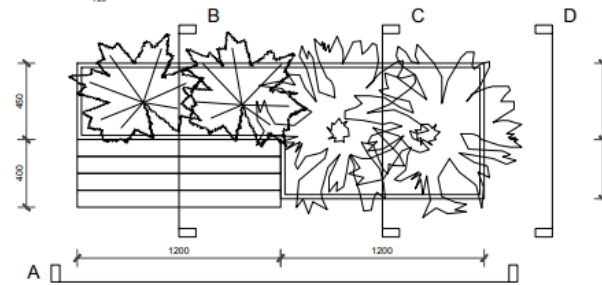
Planters - View B  
1:25



Planters - View C  
1:25



Planters - View D  
1:25



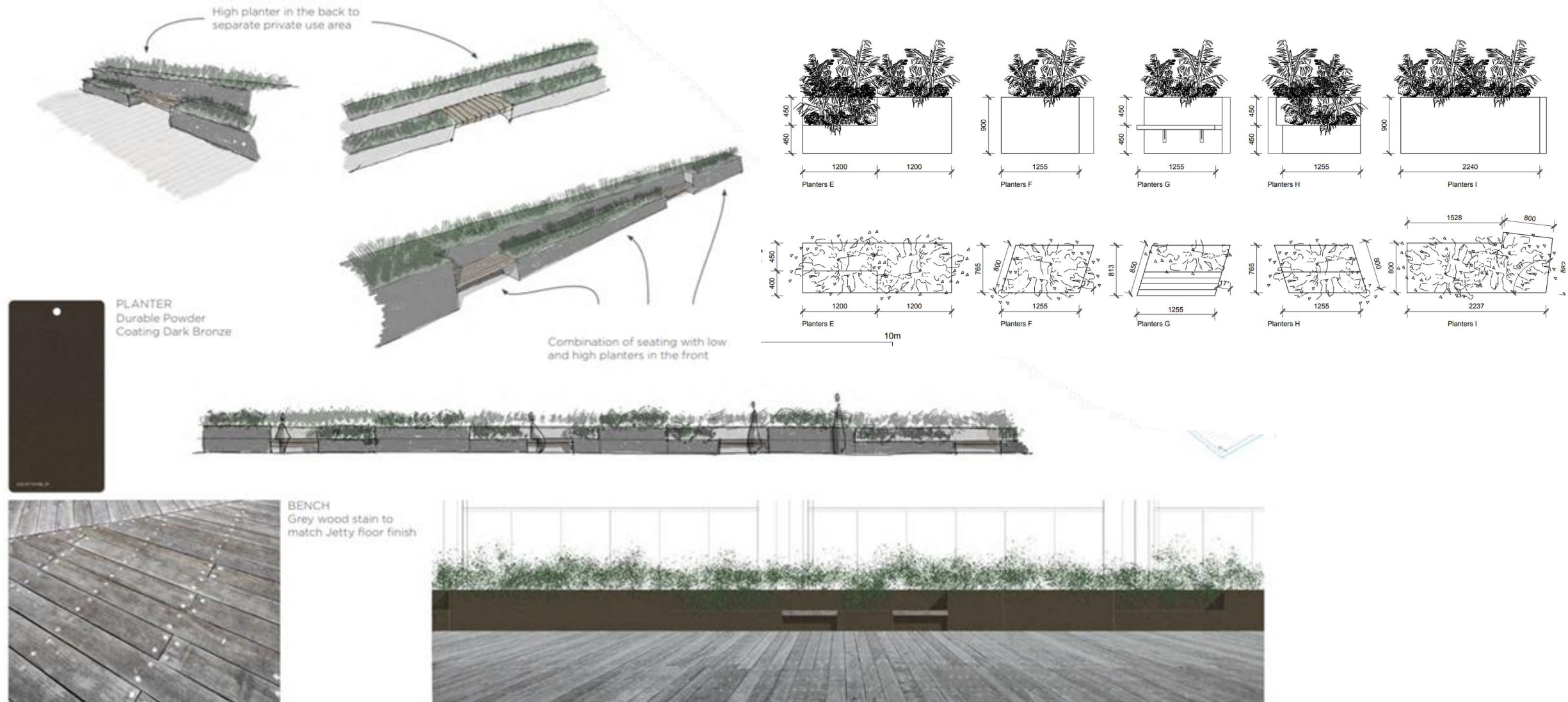
Planters - Plan View  
1:25

## Proposed Planting and Benches



# Sugar Quay Jetty

## 3.7 Landscape Design



## Proposed Planting and Benches





**Next Planning Applications Sub-Committee 30 September 2025**